



EVO2 for 2

Twin Stroller

PRODUCT REFERENCE GUIDE

Thank you for purchasing a quality VALCO BABY product. Please read and follow the instructions outlined in this guide carefully. Familiarise yourself with the construction and safety features; be sure that you understand all the warnings and safety guidelines before use.

 **Important: Please read the following instructions carefully before assembling this product. Retain this guide in a safe place for future reference.**



Due to our policy of continuous product development, this product is constantly evolving. It is possible that some features or procedures outlined here have changed since this document was written. If you are unsure of any procedure shown here, please contact us via the web at info@valco.com.au to obtain the most up to date information before use. Include the batch number, which can be found on a sticker on the frame.

All pictures and diagrams herein are provided for illustration purposes only. Actual product, colour or fabric may vary. VALCO BABY reserves the right to modify or alter any specification or colour without notice or obligation to modify any product previously purchased

FURTHER INFORMATION

In Australia/New Zealand
www.valco.com.au

In North America only
www.valcobaby.com
1800 610 7850



© Copyright VE 2011
vs300311

STROLLER ASSEMBLY/OPENING

FIGURE A - ASSEMBLING YOUR STROLLER

1. Remove the carton contents carefully. Dispose of any packaging materials thoughtfully.
2. Release the stroller from the locked position by lifting the locking hinge from over the locking rivet on the stroller frame. HINT: You may need to squeeze the stroller legs and handles closer together first so as to release the tension on the rivet.

FIGURE B - ASSEMBLING YOUR STROLLER

3. Standing behind the stroller and holding it by the handles, allow the wheels to fall forward.
4. With your foot, press down on both primary locking hinges until the entire frame locks into the open position.

IMPORTANT WARNING: ALWAYS TEST THAT ALL LATCHES ARE SECURELY ENGAGED BEFORE USE.

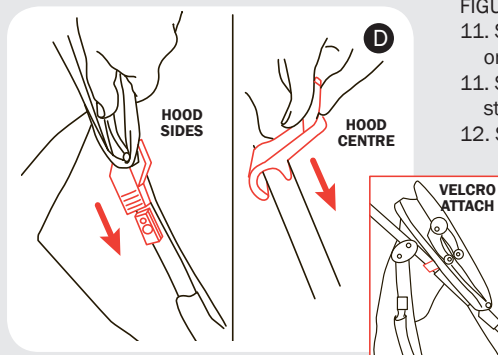
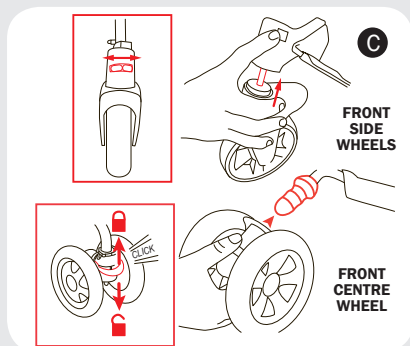
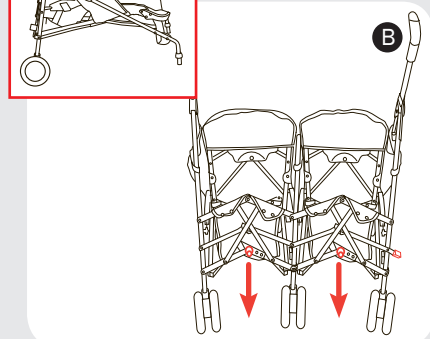
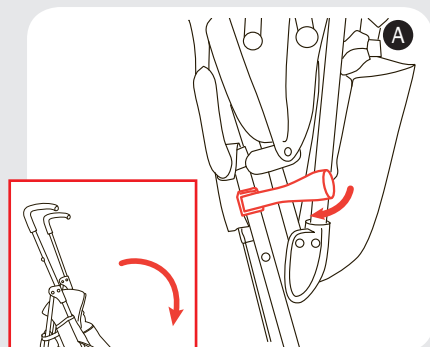
FIGURE C - CONNECTING THE FRONT WHEELS

NOTE: THE REAR WHEELS COME ATTACHED TO YOUR STROLLER AND REQUIRE NO ASSEMBLY

5. **Single Front Side Wheels:** Insert the front swivel wheel pin into the housing on the front leg and push upward until you feel it lock into place. Repeat for the other wheel.
6. To fix the front wheels in the non swivel position, slide the latch on the front of the each wheel housing to the outside and turn the wheel until it locks into place.
7. To unlock, slide the latch on the front of each wheel housing to the inside.
8. **Double Front Centre Wheel:** Insert the centre front swivel wheel over the housing on the front leg and push upward until you feel it lock into place. **Be sure to insert wheel (underneath the pram), in the direction of the arrow, with the lock at the top.**
9. To fix the front wheels in the non swivel position, turn the wheel so that the two notches on both housings line up.
10. Lift the swivel lock until it locks into place. To unlock, press down firmly on the red swivel lock to release.

FIGURE D - ATTACHING THE HOOD

11. Slide the hood fixture into the corresponding housing on the sides of the stroller frame
11. Snap the center hood connector to the centre bar of the stroller frame.
12. Secure the rear of each hood to the frame by wrapping and securing the Velcro strap around the frame.
13. Repeat for the other side.
14. Arrange the rear hood skirt beneath and around each seat back and secure the snaps to the corresponding snaps found on the back of each seat.



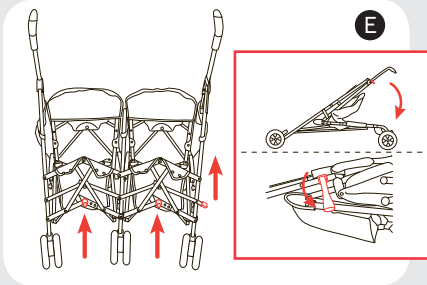


FIGURE E - FOLDING YOUR STROLLER

15. Lift the primary safety lock (a) with your foot or hand.
16. Press down on the secondary lock (b) with your foot.
17. Simultaneously push the handles all the way down to meet the wheels (or bring the wheels up to the handles).
18. When pushed down fully, the frame lock should automatically engage.

FIGURE F - USING YOUR BRAKES

19. To activate the brake press down on each brake lever until it engages in the brake cog on the wheel.
20. To release, lift each brake lever in turn.

WARNING: ALWAYS ENGAGE BOTH WHEEL BRAKES WHEN THE STROLLER IS AT REST.

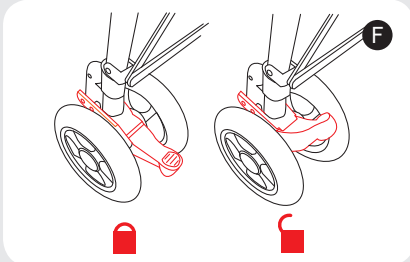


FIGURE G - ADJUSTING YOUR SEAT

21. To raise the seat, gently lift the seat forward into the desired position.
22. To recline the seat, simultaneously lift both seat recline levers and ease the seat back to the desired position.

ALWAYS TEST THAT THE SEAT IS SECURELY FIXED IN POSITION BEFORE USE.

FIGURE G - ADJUSTING YOUR FOOTREST

23. To adjust your footrest downward, press on each adjuster in turn while simultaneously pressing down lightly on the footrest.

FOR SAFETY, YOUR FOOTREST IS DESIGNED TO COLLAPSE IF EXCESS WEIGHT IS APPLIED TO IT.

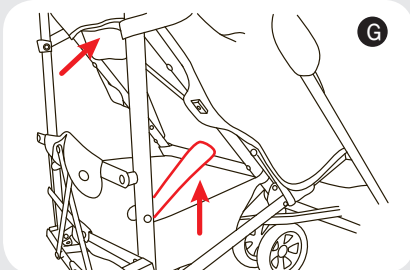


FIGURE O - USING YOUR HARNESS

YOUR STROLLER IS FITTED WITH OUR UNIQUE MULTI POINT SAFETY HARNESS SYSTEM. ALWAYS USE THE HARNESS, CORRECTLY FITTED AND ADJUSTED, WITH YOUR CHILD IN THIS SEAT

TO SECURE YOUR CHILD IN THE HARNESS:

FIGURE I

24. Slide the shoulder strap buckle (1) into the housing of the waist strap buckle (2), forming a complete buckle
25. Repeat for the opposite side.
26. Insert the completed buckle (3) in the buckle housing (4) until it engages securely in place.
27. Repeat for the opposite side.
28. Carefully adjust the harness straps to snugly fit your child by adjusting the Sliders located on all Shoulder Straps, Waist Straps and the Crotch Strap (5).

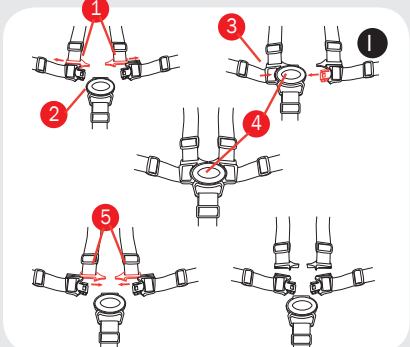
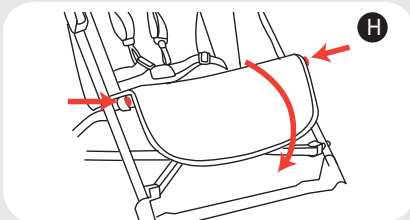
Your harness can be adjusted for even more comfort for smaller or larger children by threading the harness webbing through the adjusting 'sliders' in either direction, you can change the length of the webbing thus making them tighter or looser over your child's torso.

The harness should be snugly fitted to the baby's body, tight enough so that the baby cannot wriggle itself free of the straps but loose enough so as not to cause the baby any discomfort.

TO OPEN YOUR HARNESS

29. Press down firmly on the button in the center of the buckle housing (4). The waist and shoulder strap sections will spring free of the buckle housing.
30. If they do not automatically release, slide the shoulder strap buckles (1) free from the waist strap sections. This is to ensure that they do not form a potential entrapment area.
31. Your harness will separate into 5 sections

IMPORTANT WARNING: WHEN NOT IN USE DISCONNECT SHOULDER STRAPS FROM THE WAIST STRAP AND/OR BUCKLE.



⚠ WARNING: TO AVOID INJURY OR DEATH ⚠

- **ALWAYS APPLY THE BRAKES WHENEVER THE PRAM/STROLLER IS STATIONARY**
- **DO NOT LEAVE CHILDREN UNATTENDED.**
- **SECURE THE CHILD IN THE HARNESS AT ALL TIMES.**
- **DO NOT CARRY EXTRA CHILDREN OR BAGS ON THIS PRAM/STROLLER.**
- **MAKE SURE CHILDREN ARE CLEAR OF ANY MOVING PARTS IF YOU ADJUST THE PRAM/STROLLER. OTHERWISE THEY MAY BE INJURED.**
- **WARNING: USE THIS HARNESS AT ALL TIMES.**
- **WARNING: WHEN NOT IN USE DISCONNECT SHOULDER STRAPS FROM THE WAIST STRAP AND/OR BUCKLE.**
- **FOLLOW THE MANUFACTURER'S INSTRUCTIONS.**

Remember, your child's safety is your responsibility...

- NEVER USE ON STAIRS OR ESCALATORS.
- ALWAYS USE THE TETHER STRAP WHEN THE STROLLER IS IN USE.
- THE CORRECT USE AND MAINTENANCE OF THIS VEHICLE ARE ESSENTIAL.
- BE SURE THAT ALL CLAMPS AND BUCKLES ARE SECURELY FIXED AND IN PLACE BEFORE USE
- WHEN IN THE STROLLER, CHILDREN MUST ALWAYS WEAR THE SAFETY HARNESS, CORRECTLY FITTED AND ADJUSTED, AT ALL TIMES.
- ALWAYS USE THE HARNESS, CORRECTLY FITTED AND ADJUSTED, WITH YOUR CHILD IN THIS SEAT.
- THE MAXIMUM WEIGHT LIMIT OF EACH SEAT IS 15 KGS
- THE MAXIMUM HEIGHT OF CHILD FOR WHICH THIS STROLLER WAS INTENDED IS 90CM (35INCHES).
- THE STROLLER WILL BECOME UNSTABLE IF THE MANUFACTURER'S RECOMMENDED LOAD IS EXCEEDED.
- CARE MUST BE TAKEN WHEN FOLDING AND UNFOLDING THE PRODUCT TO PREVENT FINGER ENTRAPMENT.
- CAN BE USED FROM A NEWBORN BABY ONWARDS. A COCOON, SPECIALLY DESIGNED TO BE USED WITH A STROLLER, IS RECOMMENDED WHEN ANY FULLY RECLINING STROLLER IS USED WITH A NEWBORN.
- NEVER RUN WITH A NEWBORN BABY IN ANY PRAM OR STROLLER UNTIL THE CHILD CAN SIT UP UNASSISTED (APPROXIMATELY 6 MONTHS).
- CHECK ALL PARTS BEFORE USE FOR BREAKAGE OR FATIGUE. DISCONTINUE USE IMMEDIATELY IF ANY PART IS FOUND TO BE DAMAGED OR BROKEN.
- MAXIMUM LOAD OF BASKETS: 3.5KGS.
- DO NOT CARRY ADDITIONAL CHILDREN. THIS STROLLER IS MANUFACTURED FOR THE USE WITH TWO CHILDREN ONLY
- ALWAYS BE AWARE OF THE RISKS PROVIDED BY FIRE AND OTHER SIGNIFICANT SOURCES OF HEAT SUCH AS RADIATORS, ETC. WHICH MAY BE IN THE IMMEDIATE VICINITY OF YOUR STROLLER.
- IT MAY BE UNSAFE TO USE ANY ACCESSORIES OTHER THAN VALCO BABY APPROVED ONES.
- THIS PRODUCT IS INTENDED FOR DOMESTIC USE ONLY. IT IS NOT INTENDED FOR COMMERCIAL USE.

Should the chassis become wet, dry off promptly before storing. If this pram is used near the ocean or salted roads, spray the chassis and seat frame with water and dry. We recommend a rust inhibiting product should be used to prevent rust and fatigue on metal parts.

We recommend that you wipe down axles and lubricate the wheels every 3 months. Sand and dirt can grind down axles, if you live near the beach or in a dusty environment you must wipe down the axles and wheels then lubricate them monthly.

AXLES ARE BEST LUBRICATED WITH GREASE OR PETROLEUM JELLY. MOVING PARTS ARE BEST LUBRICATED WITH SILICONE BASED PRODUCTS. DO NOT USE OIL BASED PRODUCTS.



In Australia/New Zealand
www.valco.com.au

In North America only
www.valcobaby.com
1 800 610 7850